



Tubes for web and mobile users

The shortcut to mainframe modernization

Tubes is the world's most technologically advanced session management solution and a powerful tool for modernizing access to your mainframe applications.

Instantly web enable your mainframe applications

Organizations facing the daunting prospect of developing new web interfaces for their mainframe applications can use Tubes as a quick and cost-effective alternative. The unique Tubes browser interface provides instant web and mobile access to all of your mainframe applications, with no development costs or effort involved.

Stop using terminal emulation software and reduce your license charges

The Tubes browser interface increases convenience and productivity for users because they are no longer tied to a computer that is running a terminal emulator. Now you can interact with your mainframe applications using any device with a browser. At the same time, you can deliver significant cost savings because you no longer need to pay for terminal emulation software to access the mainframe.

Key features of Tubes for web and mobile users

- **Effortless web enablement** – all your existing mainframe 3270 and IBM i 5250 screens are automatically transformed into web interfaces: no programming changes are required
- **Optimization for touchscreen and mouse** – function keys are replaced with on-screen buttons to allow navigation by pointing and clicking or using a touchscreen
- **Secure web access** – unlike web interfaces built from scratch, Tubes has in-built security for controlling user access to individual applications, features and commands, integrates with external security products such as RACF and supports multi-factor authentication
- **Enhanced usability** – in addition to the standard Tubes session management functions, a new main menu and a new operator and help desk interface include many extra features to increase productivity and ease of use, such as drop-down menus and advanced search capabilities
- **Performance monitoring** – an integrated performance dashboard helps you to improve service levels by monitoring key metrics such as response times and user activity. Tubes also delivers real-time insights through Splunk and supports all leading analytics, data visualization, reporting and business intelligence tools

Create a brand new screen layout quickly and painlessly

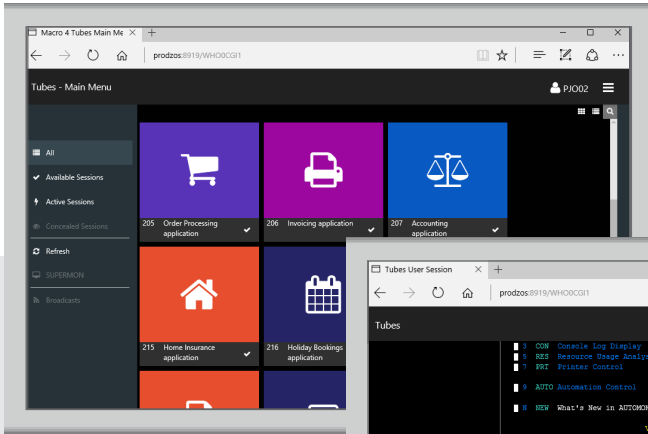
To create a completely new web interface within hours simply choose the option to customize your screen layouts. You can easily update the appearance of screens, hide an application's mainframe origins by removing the command line, and add new features such as pop-up menus and calendars.

Tubes provides browser access to your mainframe and IBM i applications from an advanced session management interface

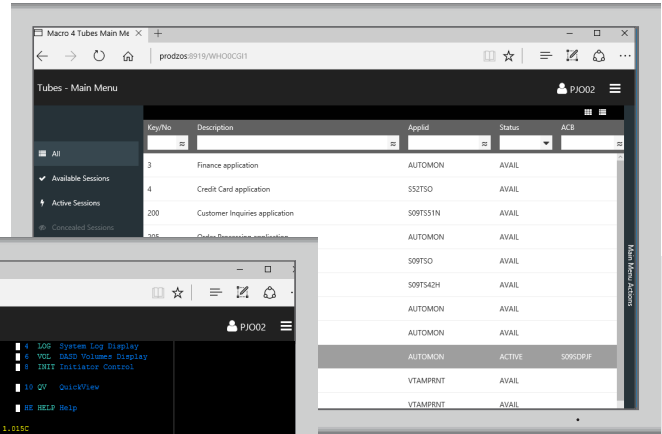


Accessing a mainframe application from the Tubes browser interface

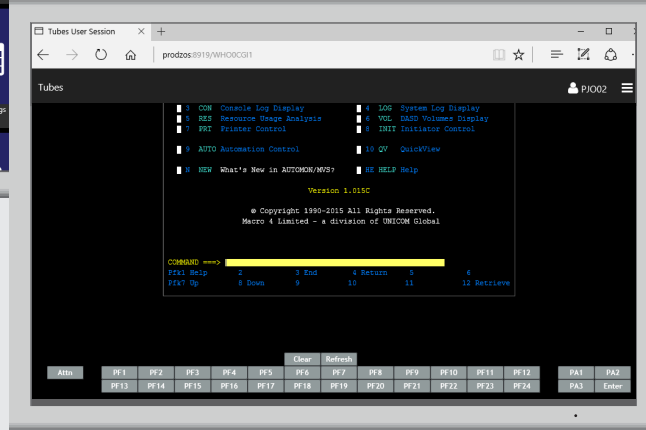
The user has a choice of two menus:



The mobile dashboard gives an at-a-glance view of all mainframe applications the user can access.

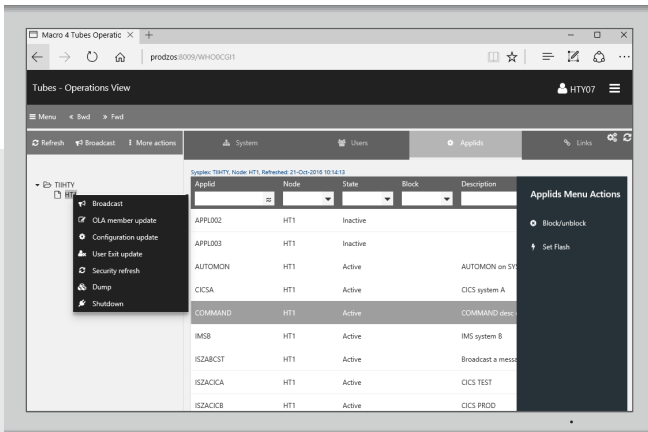


The classic list-based view displays more detail and is ideally suited to larger screens.



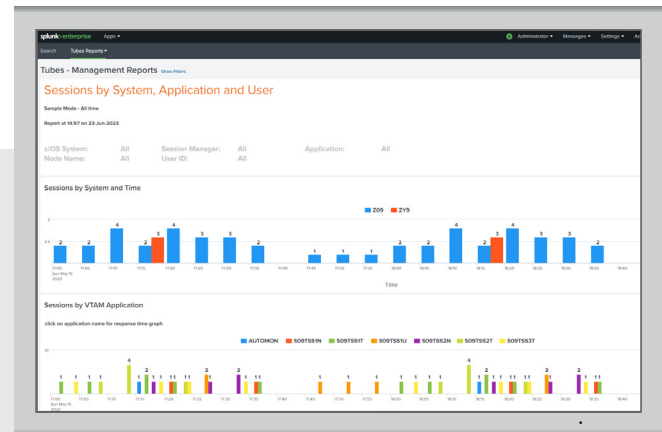
The user's chosen application is instantly web-enabled, with full mouse and touchscreen control.

The Tubes operator and help desk interface



Tabs and drop-downs improve ease of use and reduce the need for training. The same approach can be adopted to customize the appearance of any mainframe application.

Performance monitoring



Real-time, historical and trend data can be viewed and analyzed.

More about Tubes

Tubes is a leading session management solution that provides secure, flexible, user-friendly and responsive access to applications running on IBM mainframe systems. From a single sign-on, Tubes delivers concurrent multi-session application support.

Users can switch easily between sessions, with no loss of context, leading to greater efficiency and productivity. The software includes a comprehensive suite of features, including a range of user interfaces (web, mobile, 3270 and Eclipse); online and batch administration capabilities; application performance monitoring; and powerful helpdesk facilities.

Trademarks and registered trademarks: www.macro4.com/trademarks

Please contact us for more information:

USA Tel: +1 973 526 3900 Email: market.usa@macro4.com

Europe Tel: +44 1293 872000 Email: market@macro4.com

© Copyright 1982–2023 All Rights Reserved. Macro 4 Limited – a division of UNICOM Global.

www.macro4.com